

Schoonies

Bouldering Guide

© Derek Marshall 2025/02/12

www.easterncaperockclimbing.co.za



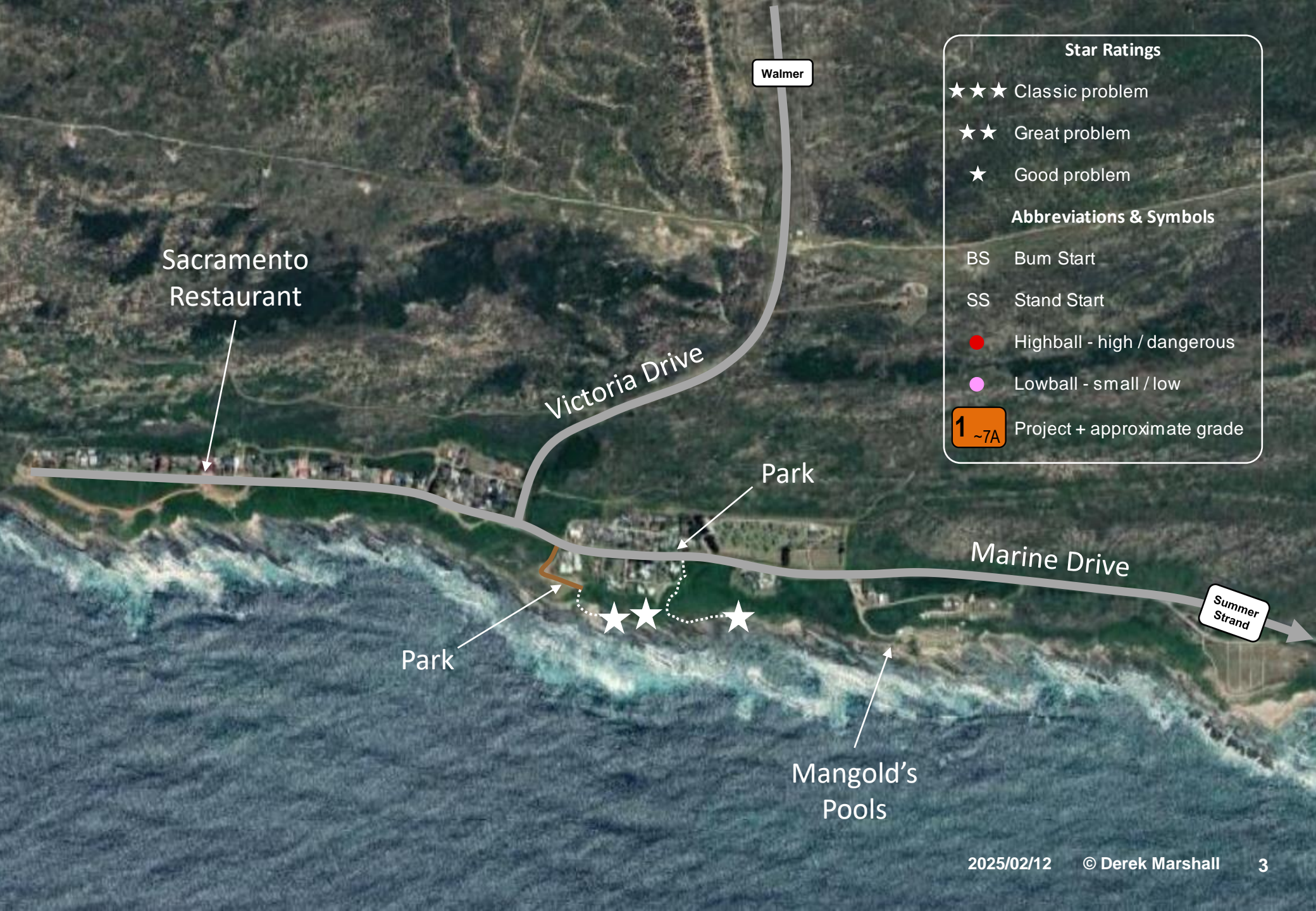
There are a couple of boulder problems & traverses on the beach. It is a bit limited, but there is potential for new problems. Please understand that this is more of a local after work venue, some fun, very pleasant, but not Rocklands. Hardest problem at this stage is *Deepest Blue* (7A+). There are more boulders & thus perhaps more potential.

Access - unrestricted

Directions & Map

- Get smart, use

- Google to get there! 😊



Star Ratings

- ★★★★ Classic problem
- ★★ Great problem
- ★ Good problem

Abbreviations & Symbols

- BS Bum Start
- SS Stand Start
- Highball - high / dangerous
- Lowball - small / low
- 1 ~7A Project + approximate grade

Sacramento Restaurant

Victoria Drive

Walmer

Park

Marine Drive

Summer Strand

Park

Mangold's Pools

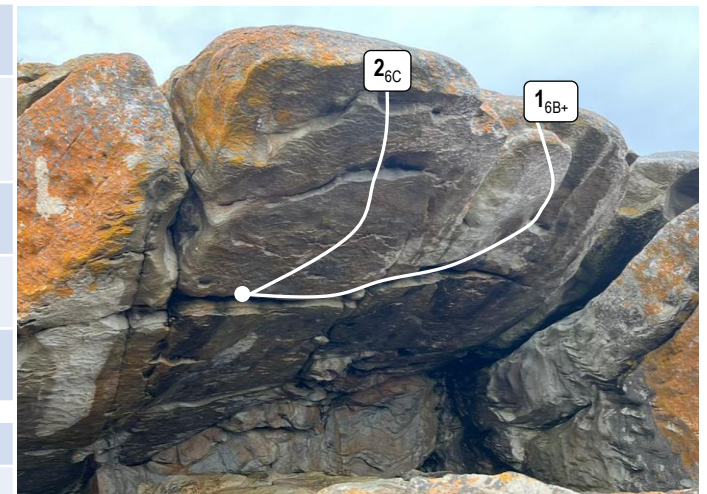
Lots of easier problems 4-5C

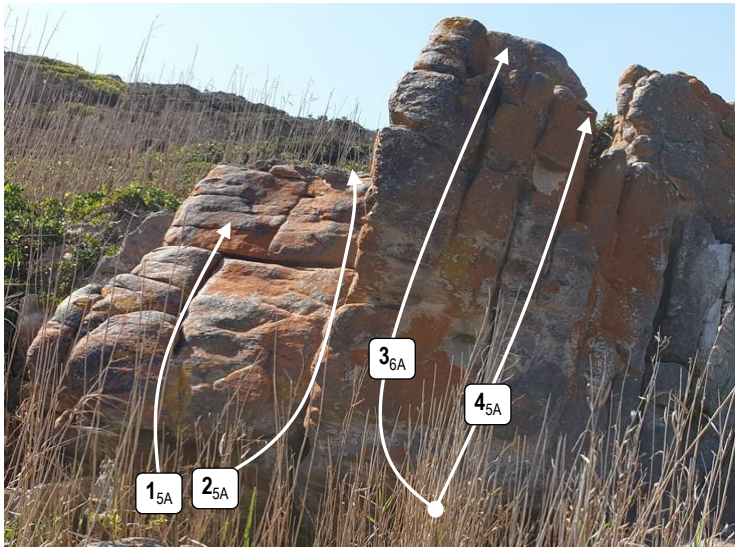


1	Crack Whore Crack Crack ★★	6C+	Low start RH in crack & LH on jug. Out staying on the crack.
2	Deepest Blue ★★★	7A+	Sit start at the lowest point of the cave on the two prominent slopy horns. Climb through the roof to join with Deep Blue & out at the highest point of the cave.
3	Deep Blue ★★	7A	Direct or short version of <i>Deepest Blue</i> . Start in prominent crack & climb straight up through the cave roof, out at the highest point.
4	Buckshot Barnacle	6C	BS in the cave, out onto the arête of the overhang, follow the arête to top out on the nose.
5	Project	~7A	BS, on LHS on jug, traverse all the way R (above the slab) Then top out.

This boulder is about 200m up the beach (towards Summerstrand) from *Crack Whore Crack Crack Boulder*.

1	Jesters Privilege ★★★	6B+	BS with both hands on the jug rail on LHS of the cave, traverse R & move up through the roof & top out.
2	Jesters Direct ★★	6C	Start as for <i>Jesters Privilege</i> , go straight up through the roof & mantle out.





These problems are close to *Mangold's Pools*.

1	Miracle Worker ●	5A	BS on jugs. Up crack.
2	I'm Broken Too ●	5A	BS on jugs. Up crack into open book.
3	Light in the Darkness ★	6A	BS up arête.
4	Disrespectful Loyalty	5A	BS directly up.
5	That is Who You Are ●	5C	BS up bulging arête.
6	Potential	~7A	BS on bulge.
7	Broken	5	BS up brokenness.
8	Wake Up Sleeper	5	BS up wide crack.
9	Stunning Crack ★	5C	BS up best looking crack.
10	Rise From Death	4	BS up wide crack.
11	Seats To Streets	4	SS up cracks & brokenness.
12	Heart For the House	4	SS up cracks & brokenness.
13	Death on Toast	4	SS up cracks & brokenness.
14	All of the Darkness ●	4	BS in rail, out.

