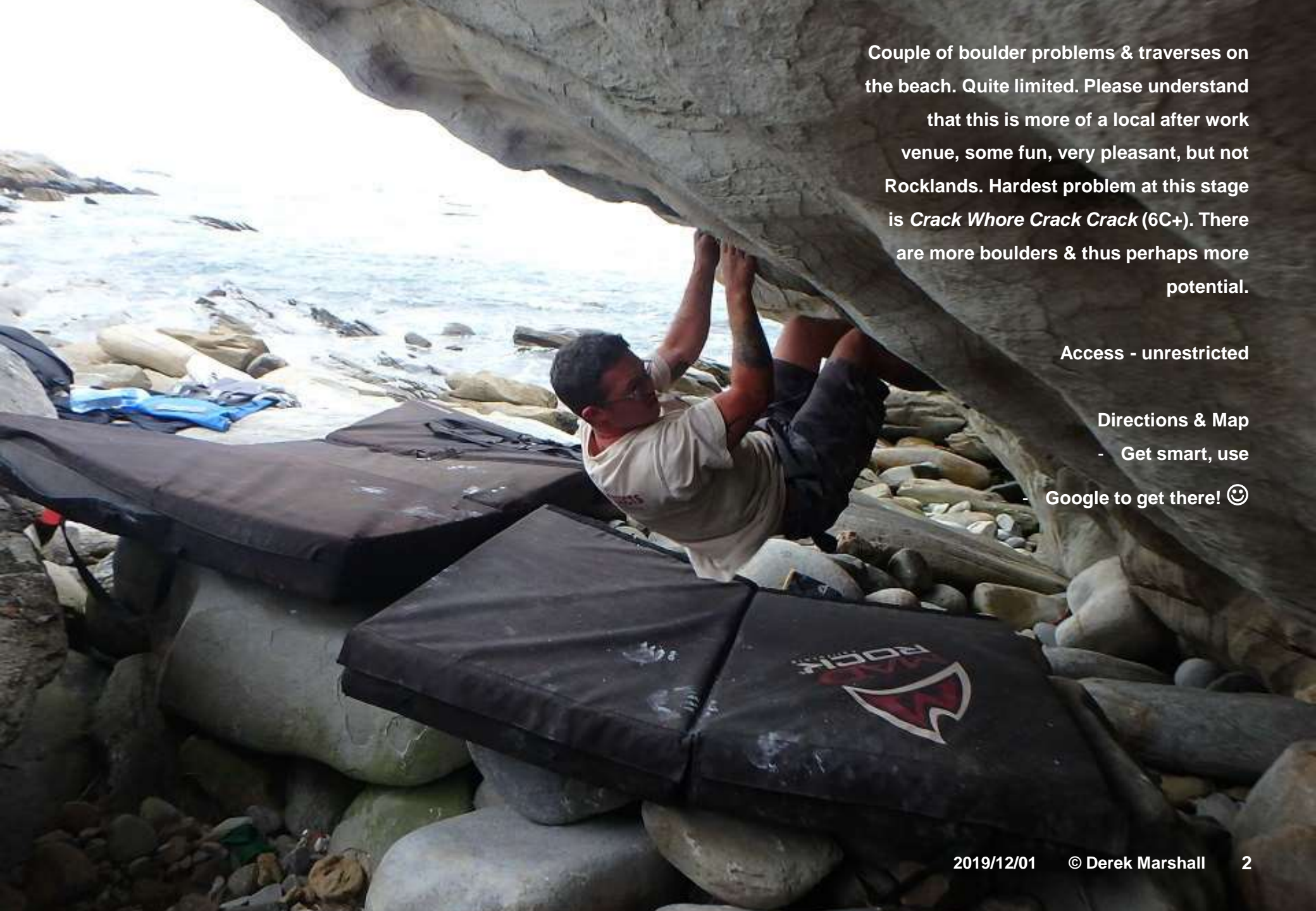


# Schoonies

## Bouldering Guide

© Derek Marshall 2019/12/01

[www.easterncaperockclimbing.co.za](http://www.easterncaperockclimbing.co.za)



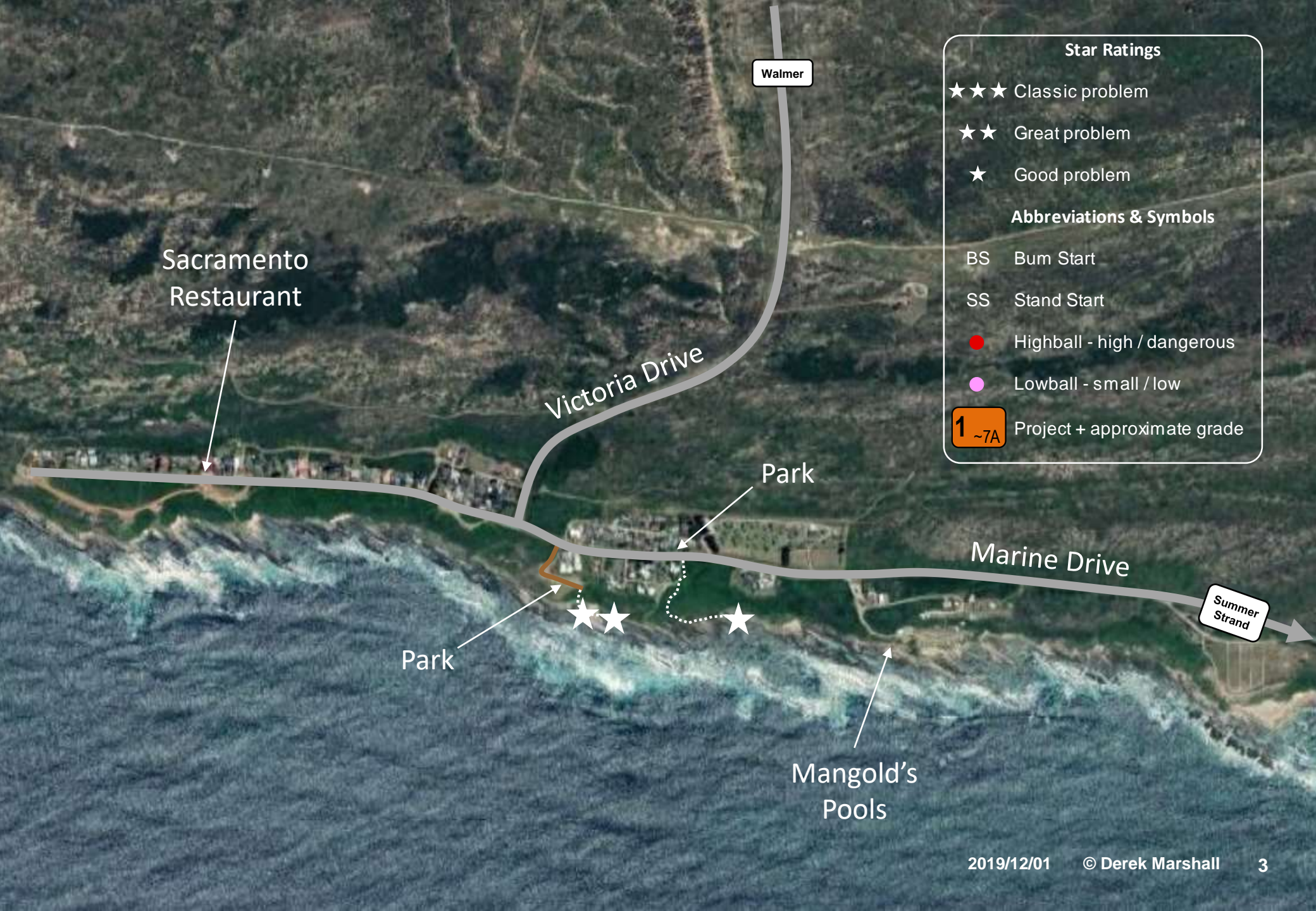
Couple of boulder problems & traverses on the beach. Quite limited. Please understand that this is more of a local after work venue, some fun, very pleasant, but not Rocklands. Hardest problem at this stage is *Crack Whore Crack Crack* (6C+). There are more boulders & thus perhaps more potential.

Access - unrestricted

Directions & Map

- Get smart, use

- Google to get there! 😊



**Star Ratings**

- ★★★★ Classic problem
- ★★ Great problem
- ★ Good problem

**Abbreviations & Symbols**

- BS Bum Start
- SS Stand Start
- Highball - high / dangerous
- Lowball - small / low
- 1 ~7A Project + approximate grade

Walmer

Sacramento Restaurant

Victoria Drive

Park

Marine Drive

Summer Strand

Park

Mangold's Pools



Lots of easier problems 4-5C

1	<b>Crack Whore Crack Crack ★★</b>	6C+	Low start RH in crack & LH on jug. Out staying on the crack.
2	<b>Project</b>	~7A	BS, on LHS on jug, traverse all the way R (above the slab) Then top out.



These problems are close to Mangold's Pools.

1	<b>Miracle Worker</b> ●	5A	BS on jugs. Up crack.
2	<b>I'm Broken Too</b> ●	5A	BS on jugs. Up crack into open book.
3	<b>Light in the Darkness</b>	6A	BS up arête.
4	<b>Disrespectful Loyalty</b>	5A	BS directly up.
5	<b>That is Who You Are</b> ●	5C	BS up bulging arête.
6	<b>Potential</b>	~7A	BS on bulge.
7	<b>Broken</b>	5	BS up brokenness.
8	<b>Wake Up Sleeper</b>	5	BS up wide crack.
9	<b>Stunning Crack</b> ★	5C	BS up best looking crack.
10	<b>Rise From Death</b>	4	BS up wide crack.
11	<b>Seats To Streets</b>	4	SS up cracks & brokenness.
12	<b>Heart For the House</b>	4	SS up cracks & brokenness.
13	<b>Death on Toast</b>	4	SS up cracks & brokenness.
14	<b>All of the Darkness</b> ●	4	BS in rail, out.

